



ALKON
EXTREMETM
FITTINGS

XQ-DOT SPECIFICATIONS:

Temperature Range: -40 °F to 400 °F

Threads: NPTF Standard

Recommended Tubing: J844 Air Brake Tubing

Air Brake Performance Requirements: D.O.T. FMVSS 571.106
SAE J1131
J2494-1 & J2494-3

Brass: CA360 & CA377

Defeat the Heat, Put the Cold On Hold

XQ-DOT air brake brass push-in fittings from Alkon hold up better in extreme temperatures from blistering heat to numbing cold. Better chemical resistance helps protect against early failure. Customers will get more mileage between replacements.

- ◆ **Withstands temperature extremes from -40°F to 400°F**
- ◆ Higher grade thread sealant resists chemical attack, corrosion, vibration and thermal shock for a longer lasting tight seal
- ◆ For OTR vehicles, such as, heavy machinery, agricultural/construction equipment, public transit, and oil/gas industry applications



Road-Tested for Years

Alkon XQ push-in fittings have been used successfully for years in all types of extreme weather and road conditions. Due to overwhelming demand, Alkon has decided to release this product as a complete product line.

Available in union, straight, elbow and tee, both swivel and non-swivel, configurations in a wide range of sizes, Alkon XQ push-in fittings are used with standard J844 air brake tubing.

Metric sizes available upon request.



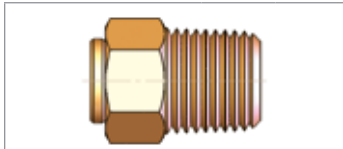
**XQ54
45° MALE ELBOW**

PART NUMBER	TUBE O.D.	PIPE
XQ54-DOT-4X2	1/4	1/8
XQ54-DOT-4X4	1/4	1/4
XQ54-DOT-6X2	3/8	1/8
XQ54-DOT-6X4	3/8	1/4
XQ54-DOT-6X6	3/8	3/8
XQ54-DOT-6X8	3/8	1/2
XQ54-DOT-8X4	1/2	1/4
XQ54-DOT-8X6	1/2	3/8
XQ54-DOT-8X8	1/2	1/2



**XQ54
SWIVEL 45° MALE ELBOW**

PART NUMBER	TUBE O.D.	PIPE
XQ54-DOTS-4X2	1/4	1/8
XQ54-DOTS-4X4	1/4	1/4
XQ54-DOTS-6X2	3/8	1/8
XQ54-DOTS-6X4	3/8	1/4
XQ54-DOTS-6X6	3/8	3/8
XQ54-DOTS-8X4*	1/2	1/4
XQ54-DOTS-8X6	1/2	3/8
XQ54-DOTS-8X8	1/2	1/2



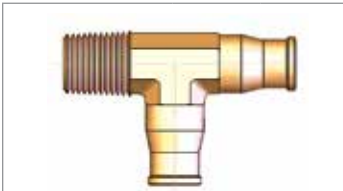
**XQ68
MALE CONNECTOR**

PART NUMBER	TUBE O.D.	PIPE
XQ68-DOT-5/32X1	5/32	1/16
XQ68-DOT-5/32X2	5/32	1/8
XQ68-DOT-4X1	1/4	1/16
XQ68-DOT-4X2	1/4	1/8
XQ68-DOT-4X4	1/4	1/4
XQ68-DOT-4X6*	1/4	3/8
XQ68-DOT-6X2	3/8	1/8
XQ68-DOT-6X4	3/8	1/4
XQ68-DOT-6X6	3/8	3/8
XQ68-DOT-6X8	3/8	1/2
XQ68-DOT-8X4	1/2	1/4
XQ68-DOT-8X6	1/2	3/8
XQ68-DOT-8X8	1/2	1/2



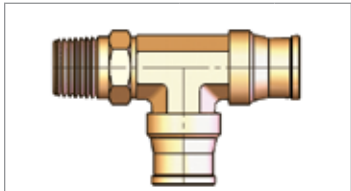
**XQ688
PRESS-IN CARTRIDGE**

PART NUMBER	TUBE O.D.
XQ688-DOT-5/32	5/32
XQ688-DOT-3*	3/16
XQ688-DOT-4	1/4
XQ688-DOT-6	3/8
XQ688-DOT-8*	1/2



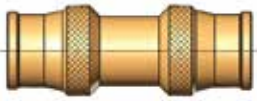
**XQ71
MALE RUN TEE**

PART NUMBER	TUBE O.D.	PIPE
XQ71-DOT-4X2	1/4	1/8
XQ71-DOT-4X4	1/4	1/4
XQ71-DOT-6X4	3/8	1/4
XQ71-DOT-6X6	3/8	3/8
XQ71-DOT-8X6*	1/2	3/8



**XQ71
SWIVEL MALE RUN TEE**

PART NUMBER	TUBE O.D.	PIPE
XQ71-DOTS-4X2	1/4	1/8
XQ71-DOTS-4X4	1/4	1/4
XQ71-DOTS-6X4	3/8	1/4
XQ71-DOTS-6X6	3/8	3/8
XQ71-DOTS-8X6	1/2	3/8
XQ71-DOTS-8X8	1/2	1/2



**XQ62
UNION CONNECTOR**

PART NUMBER	TUBE O.D.
XQ62-DOT-5/32	5/32
XQ62-DOT-4	1/4
XQ62-DOT-6	3/8
XQ62-DOT-8	1/2



**XQ64
UNION TEE**

PART NUMBER	TUBE O.D.
XQ64-DOT-4	1/4
XQ64-DOT-6	3/8
XQ64-DOT-8	1/2



**XQ65
UNION ELBOW**

PART NUMBER	TUBE O.D.
XQ65-DOT-4	1/4
XQ65-DOT-6	3/8
XQ65-DOT-8	1/2



**XQ66
FEMALE CONNECTOR**

PART NUMBER	TUBE O.D.	TUBE O.D.
XQ66-DOT-4X2	1/4	1/8
XQ66-DOT-4X4	1/4	1/4
XQ66-DOT-6X4	3/8	1/4
XQ66-DOT-6X6	3/8	3/8
XQ66-DOT-8X6*	1/2	3/8
XQ66-DOT-8X8*	1/2	1/2



**XQ69
MALE ELBOW**

PART NUMBER	TUBE O.D.	PIPE
XQ69-DOT-5/32X2	5/32	1/8
XQ69-DOT-4X2	1/4	1/8
XQ69-DOT-4X4	1/4	1/4
XQ69-DOT-4X6	1/4	3/8
XQ69-DOT-6X2	3/8	1/8
XQ69-DOT-6X4	3/8	1/4
XQ69-DOT-6X6	3/8	3/8
XQ69-DOT-6X8	3/8	1/2
XQ69-DOT-8X4	1/2	1/4
XQ69-DOT-8X6	1/2	3/8
XQ69-DOT-8X8	1/2	1/2



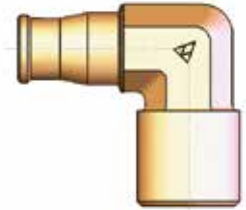
**XQ69
SWIVEL MALE ELBOW**

PART NUMBER	TUBE O.D.	PIPE
XQ69-DOTS-5/32X2	5/32	1/8
XQ69-DOTS-5/32X4*	5/32	1/4
XQ69-DOTS-4X2	1/4	1/8
XQ69-DOTS-4X4	1/4	1/4
XQ69-DOTS-4X6	1/4	3/8
XQ69-DOTS-6X2	3/8	1/8
XQ69-DOTS-6X4	3/8	1/4
XQ69-DOTS-6X6	3/8	3/8
XQ69-DOTS-6X8	3/8	1/2
XQ69-DOTS-8X4	1/2	1/4
XQ69-DOTS-8X6	1/2	3/8
XQ69-DOTS-8X8	1/2	1/2



**XQ70
SWIVEL FEMALE ELBOW**

PART NUMBER	TUBE O.D.	FEMALE PIPE
XQ70-DOTS-4X2	1/4	1/8
XQ70-DOTS-4X4	1/4	1/4
XQ70-DOTS-6X4	3/8	1/4



**XQ70
FEMALE ELBOW**

PART NUMBER	TUBE O.D.	FEMALE PIPE
XQ70-DOT-4X2	1/4	1/8
XQ70-DOT-4X4	1/4	1/4
XQ70-DOT-4X6*	1/4	3/8
XQ70-DOT-6X4	3/8	1/4
XQ70-DOT-6X6	3/8	3/8
XQ70-DOT-8X8*	1/2	1/2



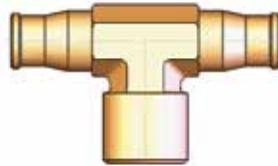
**XQ72
MALE BRANCH TEE**

PART NUMBER	TUBE O.D.	PIPE
XQ72-DOT-4X2	1/4	1/8
XQ72-DOT-4X4	1/4	1/4
XQ72-DOT-6X4	3/8	1/4
XQ72-DOT-6X6	3/8	3/8
XQ72-DOT-8X4*	1/2	1/4
XQ72-DOT-8X6	1/2	3/8



**XQ72
SWIVEL MALE BRANCH TEE**

PART NUMBER	TUBE O.D.	PIPE
XQ72-DOTS-4X2	1/4	1/8
XQ72-DOTS-4X4	1/4	1/4
XQ72-DOTS-6X2	3/8	1/8
XQ72-DOTS-6X4	3/8	1/4
XQ72-DOTS-8X4	1/2	1/4
XQ72-DOTS-8X6	1/2	3/8
XQ72-DOTS-8X8	1/2	1/2



**XQ77
FEMALE BRANCH TEE**

PART NUMBER	TUBE O.D.	PIPE
XQ77-DOT-4X2	1/4	1/8
XQ77-DOT-4X4	1/4	1/4
XQ77-DOT-6X4	3/8	1/4
XQ77-DOT-6X6*	3/8	3/8



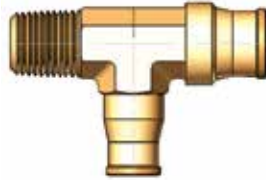
**XQ77
SWIVEL FEMALE BRANCH TEE**

PART NUMBER	TUBE O.D.	PIPE
XQ77-DOTS-4X2*	1/4	1/8
XQ77-DOTS-4X4*	1/4	1/4
XQ77-DOTS-6X4*	3/8	1/4

* Made to Order – consult factory for price and availability.



Don't See What
You Want?
Ask Us!



**XQ78
REDUCING MALE RUN TEE**

PART NO.	TUBE O.D. 1	TUBE O.D. 2
XQ78-DOT-6X4X4*	3/8	1/4



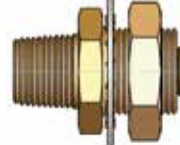
**XQ79
UNION REDUCING TEE**

PART NO.	TUBE O.D. 1	TUBE O.D. 2
XQ79-DOT-4X6	1/4	3/8
XQ79-DOT-6X5/32	3/8	5/32
XQ79-DOT-6X4	3/8	1/4



**XQ82
BULKHEAD UNION**

PART NUMBER	TUBE O.D. 1
XQ82-DOT-4	1/4
XQ82-DOT-6	3/8
XQ82-DOT-8	1/2
XQ82-DOT-10	5/8



**XQ83 GLADHAND
BULKHEAD CONNECTOR**

PART NUMBER	TUBE O.D. 1
XQ83-DOT-6X8*	3/8
XQ83-DOT-8X8	1/2



**XQ86 FEMALE
BULKHEAD UNION**

PART NUMBER	TUBE O.D.	FEMALE PIPE
XQ86-DOT-4X2	1/4	1/8
XQ86-DOT-4X4	1/4	1/4
XQ86-DOT-6X4	3/8	1/4
XQ86-DOT-6X6	3/8	3/8
XQ86-DOT-8X6	1/2	3/8

Contact Alkon Today. Call 419.333.7000 or email sales@alkoncorp.com for more information. Get on the road to reliability with Alkon.



Follow us @AlkonCorp



Keeping the world moving and working.

728 Graham Drive
Fremont, OH 43420
P: 419.333.7000
F: 419.355.9211
www.alkoncorp.com