

Use this chart as a guide when placing your order for any series Brass Push-In Fittings.

1. Choose Fractional (**AQ**) or Metric (**MAQ**) configurations.
2. Choose the Shape of the configuration from available listing.
3. Choose the Style of the configuration.
4. Choose the Tube Size based on Fractional or Metric measurements of the configuration.
5. Choose the Thread Size based on Fractional or Metric measurements of the configuration.

Call **419.333.7000** or email **sales@alkoncorp.com** for more information.

SHAPE CONFIGURATION CHART

FRACTIONAL	SHAPE	STYLES	TUBE SIZE	THREAD
AQ	<input type="text"/>	- <input type="text"/>	- <input type="text"/>	X <input type="text"/>

METRIC	SHAPE	STYLES	TUBE SIZE	THREAD
MAQ	<input type="text"/>	- <input type="text"/>	- <input type="text"/>	X <input type="text"/>

SHAPE
See the available options below and on the reverse side.

STYLES	
P	Non-Swivel
PS	Swivel
DOT	DOT – Non-Swivel
DOTS	DOT – Swivel
N*	Nickel Plated Brass (can be added to any fitting)
V*	Viton O-Ring(s) (can be added to any fitting)

*Minimum quantity may apply.

TUBE SIZE Fractional	
2	1/8"
5/32	5/32"
4	1/4"
6	3/8"
8	1/2"
10	5/8"
12	3/4"

TUBE SIZE Metric	
4	4 mm
6	6 mm
8	8 mm
10	10 mm
12	12 mm

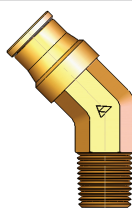
THREAD NPTF Fractional	
0	10/32"
2	1/8"
4	1/4"
6	3/8"
8	1/2"

THREAD BSPT Fractional	
2R	1/8"
4R	1/4"
6R	3/8"
8R	1/2"

THREAD (O-Ring Seal) Metric	
M12	M12 x 1.5
M16	M16 x 1.5
M22	M22 x 1.5


BSPP PIPE THREADS	
0G	M5
2G	1/8" BSPP
4G	1/4" BSPP
6G	3/8" BSPP
8G	1/2" BSPP

Metric shapes only available in swivels.

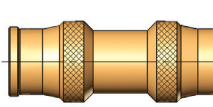
AQ54
45° MALE ELBOW

PART NUMBER	TUBE O.D.
AQ54-	1/4
AQ54-	3/8
AQ54-	1/2
AQ54-	5/8
AQ54-	3/4



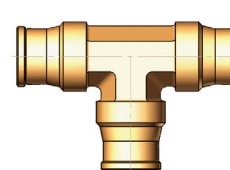
AQ54
SWIVEL 45° MALE ELBOW

PART NUMBER	TUBE O.D.
AQ54-	1/4
AQ54-	3/8
AQ54-	1/2
AQ54-	5/8
AQ54-	3/4



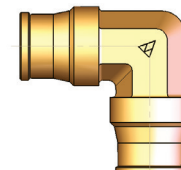
AQ62
UNION CONNECTOR

PART NUMBER	TUBE O.D.
AQ62-	1/8
AQ62-	5/32
AQ62-	3/16
AQ62-	1/4
AQ62-	3/8
AQ62-	1/2
AQ62-	5/8
AQ62-	3/4



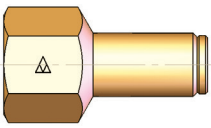
AQ64
UNION TEE

PART NUMBER	TUBE O.D.
AQ64-	1/8
AQ64-	5/32
AQ64-	3/16
AQ64-	1/4
AQ64-	3/8
AQ64-	1/2
AQ64-	5/8
AQ64-	3/4



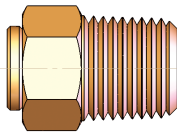
AQ65
UNION ELBOW

PART NUMBER	TUBE O.D.
AQ65-	1/8
AQ65-	5/32
AQ65-	1/4
AQ65-	3/8
AQ65-	1/2



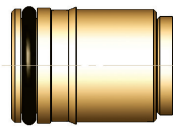
**AQ66
FEMALE CONNECTOR**

PART NUMBER	TUBE O.D.
AQ66-	1/8
AQ66-	5/32
AQ66-	3/16
AQ66-	1/4
AQ66-	3/8
AQ66-	1/2



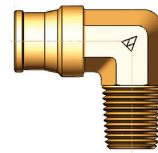
**AQ68
MALE CONNECTOR**

PART NUMBER	TUBE O.D.
AQ68-	1/8
AQ68-	5/32
AQ68-	3/16
AQ68-	1/4
AQ68-	3/8
AQ68-	1/2
AQ68-	5/8
AQ68-	3/4



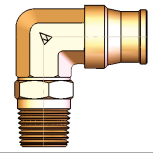
**AQ688
PRESS-IN CARTRIDGE**

PART NUMBER	TUBE O.D.
AQ688-	1/8
AQ688-	5/32
AQ688-	3/16
AQ688-	1/4
AQ688-	3/8
AQ688-	1/2
AQ688-	5/8
AQ688-	3/4



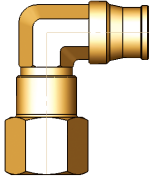
**AQ69
MALE ELBOW**

PART NUMBER	TUBE O.D.
AQ69-	1/8
AQ69-	5/32
AQ69-	3/16
AQ69-	1/4
AQ69-	3/8
AQ69-	1/2
AQ69-	5/8
AQ69-	3/4



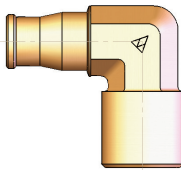
**AQ69
SWIVEL MALE ELBOW**

PART NUMBER	TUBE O.D.
AQ69-	1/8
AQ69-	5/32
AQ69-	3/16
AQ69-	1/4
AQ69-	3/8
AQ69-	1/2
AQ69-	5/8
AQ69-	3/4



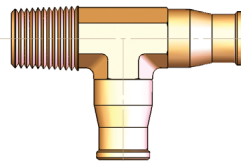
**AQ70
SWIVEL FEMALE ELBOW**

PART NUMBER	TUBE O.D.
AQ70-	1/8
AQ70-	5/32
AQ70-	1/4
AQ70-	3/8
AQ70-	1/2



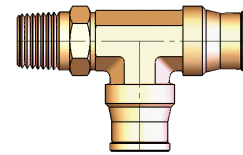
**AQ70
FEMALE ELBOW**

PART NUMBER	TUBE O.D.
AQ70-	1/8
AQ70-	5/32
AQ70-	1/4
AQ70-	3/8
AQ70-	1/2



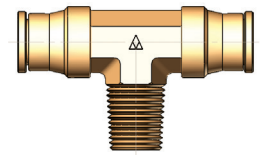
**AQ71
MALE RUN TEE**

PART NUMBER	TUBE O.D.
AQ71-	1/8
AQ71-	5/32
AQ71-	1/4
AQ71-	3/8
AQ71-	1/2



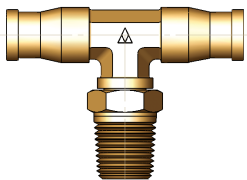
**AQ71
SWIVEL MALE RUN TEE**

PART NUMBER	TUBE O.D.
AQ71-	1/8
AQ71-	5/32
AQ71-	3/16
AQ71-	1/4
AQ71-	3/8
AQ71-	1/2
AQ71-	5/8



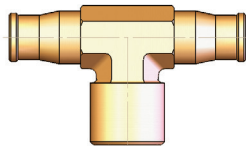
**AQ72
MALE BRANCH TEE**

PART NUMBER	TUBE O.D.
AQ72-	1/8
AQ72-	1/4
AQ72-	3/8
AQ72-	1/2



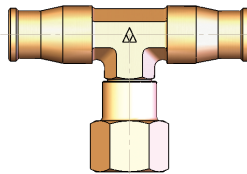
**AQ72 SWIVEL MALE
BRANCH TEE**

PART NUMBER	TUBE O.D.
AQ72-	1/8
AQ72-	5/32
AQ72-	3/16
AQ72-	1/4
AQ72-	3/8
AQ72-	1/2



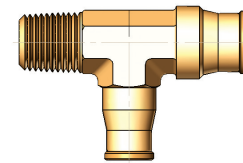
**AQ77
FEMALE BRANCH TEE**

PART NUMBER	TUBE O.D.
AQ77-	1/4
AQ77-	3/8
AQ77-	1/2



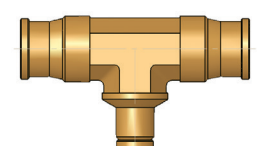
**AQ77 SWIVEL FEMALE
BRANCH TEE**

PART NUMBER	TUBE O.D.
AQ77-	1/4
AQ77-	3/8



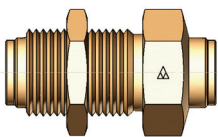
**AQ78
REDUCING MALE RUN TEE**

PART NO.	TUBE O.D. 1	TUBE O.D. 2
AQ78-	5/32	6
AQ78-	3/8	1/4



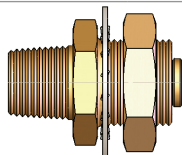
**AQ79
UNION REDUCING TEE**

PART NO.	TUBE O.D. 1	TUBE O.D. 2
AQ79-	1/4	3/8
AQ79-	3/8	5/32
AQ79-	3/8	1/4



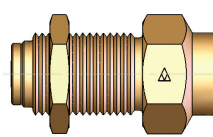
**AQ82
BULKHEAD UNION**

PART NUMBER	TUBE O.D. 1
AQ82-	1/8
AQ82-	5/32
AQ82-	3/16
AQ82-	1/4
AQ82-	3/8
AQ82-	1/2
AQ82-	5/8



**AQ83 GLADHAND
BULKHEAD CONNECTOR**

PART NUMBER	TUBE O.D. 1
AQ83-	3/8
AQ83-	1/2



**AQ86 FEMALE
BULKHEAD UNION**

PART NUMBER	TUBE O.D.
AQ86-	1/4
AQ86-	3/8
AQ86-	1/2